

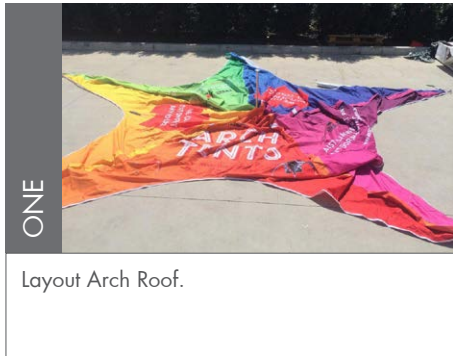
# ARCH TENT INSTRUCTIONS



**WARNING READ INSTRUCTIONS CAREFULLY BEFORE USE**

## Set Up Instructions 5m - 7.5m

Recommended procedure below. For safety reasons it is recommended that two persons set up any marquee.



Layout Arch Roof.



Position Top Pole (E) on Centre, Connect Pole (A) through sleeve on roof to pole (E) and bolt together.



Position roof peak over Top Pole (E).



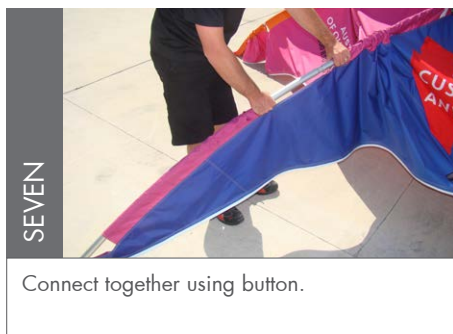
Connect Roof Peak using clips to roof webbing.



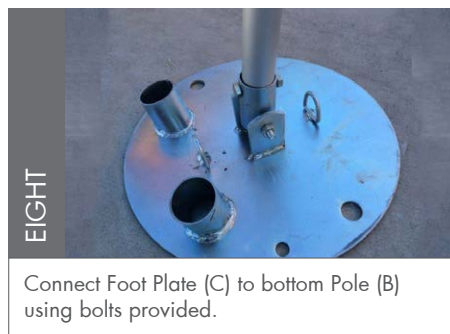
Connect Pole (B) through middle sleeve on roof and connect.



Connect Pole (B) through lower sleeve on roof.



Connect together using button.



Connect Foot Plate (C) to bottom Pole (B) using bolts provided.



Feed webbing through D Ring on plate and back up to metal clip and tension.

## ACCESSORIES



Layout Awning Fabric. Connect Awning Poles (C, D & G) together.



Insert Awning Pole into Foot Plate



Zip Roof Fabric and Awning Fabric together.



Attach Awning Pole Support Bars by fixing the velcro straps.